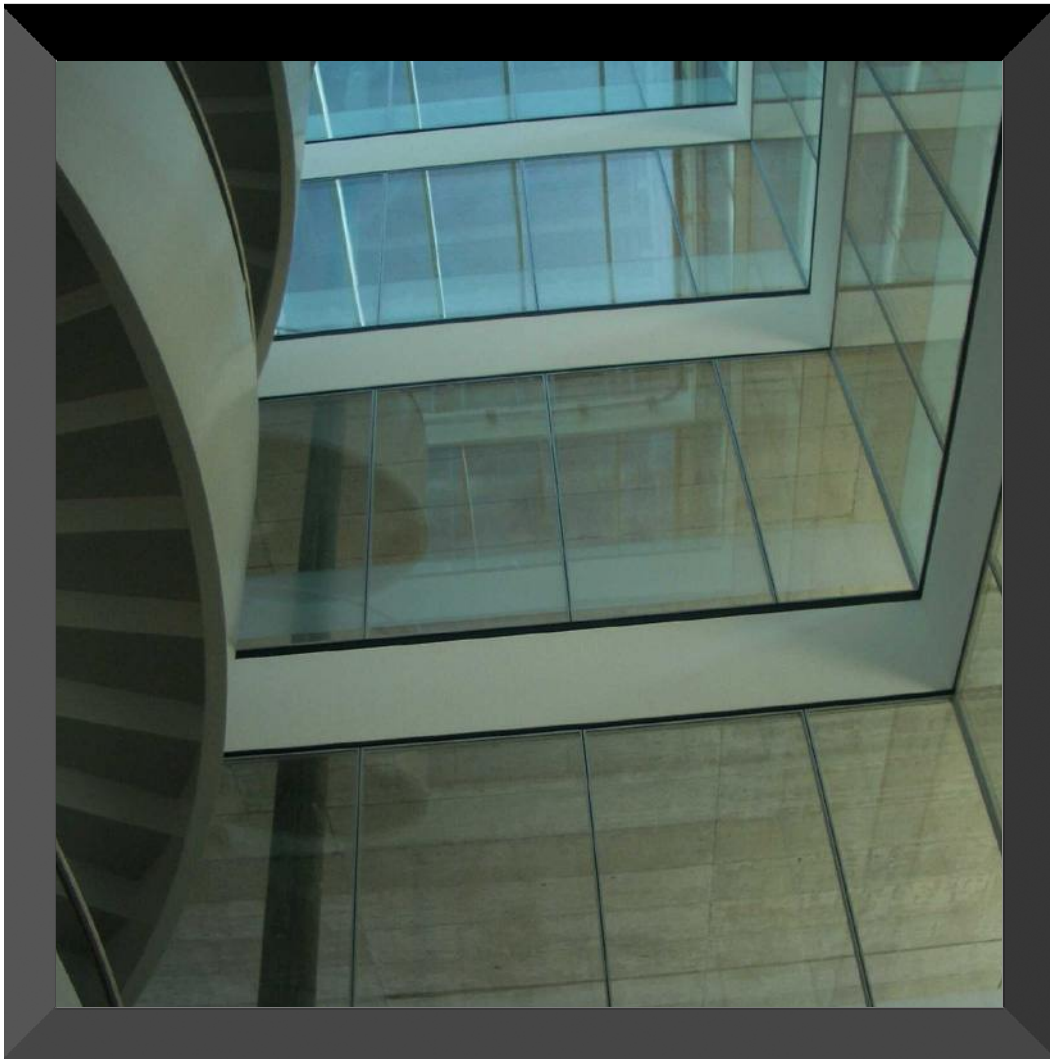




**BLESS**  
ART

## Raumsysteme

### System 1500 Brandschutz

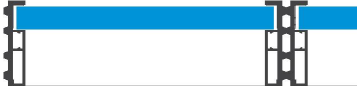




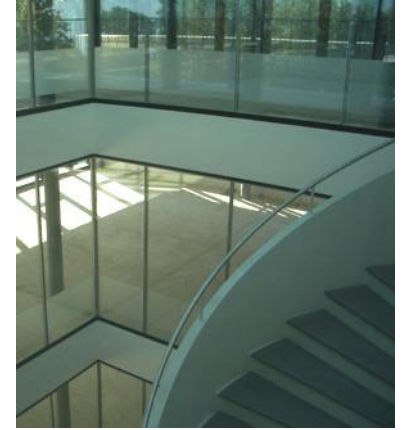
## System 1500 Brandschutz

Elementtypen EI 30 – EI 60

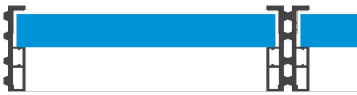
# BLESS ART



Einfachverglasung 1500-30  
Feuerschutzglas 15 mm  
Feuerwiderstand EI 30  
Rw = 38 dB



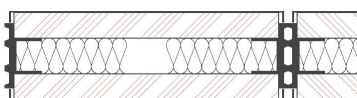
Doppelverglasung 1500-30  
Feuerschutzglas 15 mm  
ESG 5 mm  
Option: Jalousie mit Wendung  
Feuerwiderstand EI 30  
Rw = 47 dB



Einfachverglasung 1500-60  
Feuerschutzglas 23 mm  
Feuerwiderstand EI 60  
Rw = 38 dB



Doppelverglasung 1500-60  
Feuerschutzglas 23 mm  
ESG 5 mm  
Feuerwiderstand EI 60  
Rw = 47 dB

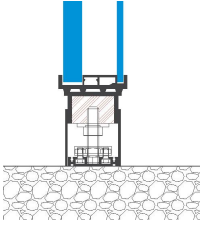


Vollelement 1500-60  
2 Brandschutzplatten  
Metallverkleidung beschichtet  
Feuerwiderstand EI 60  
Rw = 45 – 50 dB

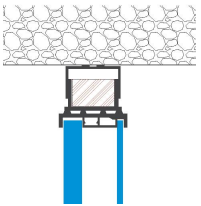


## System 1500 Brandschutz An- und Abschlüsse

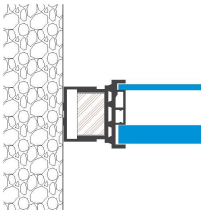
**BLESS**  
ART



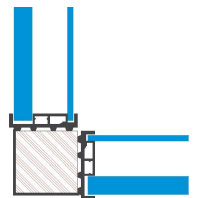
AB 1500  
Bodenanschluss H = 65 mm  
Standard schwarz



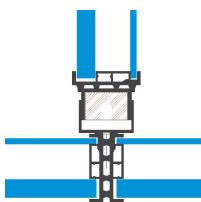
AD 1500  
Deckenanschluss H = 40 mm  
Standard schwarz



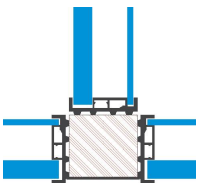
AW 1500  
Wandanschluss B = 40 mm  
Standard schwarz



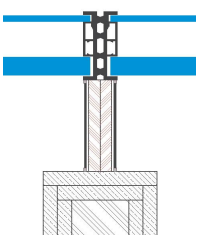
AE90 1500  
Ecke 90° Elementwand  
Standard schwarz



AT 1500  
T-Anschluss Elementwand  
Standard schwarz



A3er 1500  
3er Anschluss Elementwand  
Standard schwarz



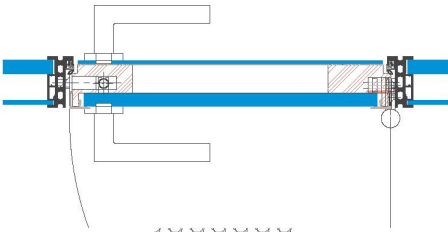
AWT 1500  
T- Anschluss auf Normwand  
Standard schwarz



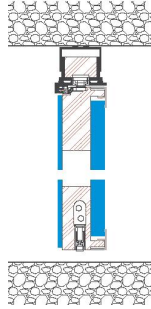


# System 1500 Brandschutz Türen EI 30

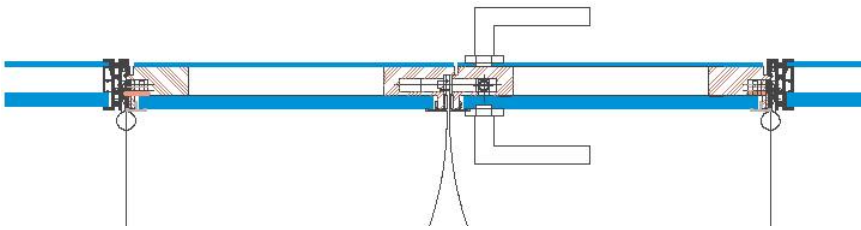
# BLESS ART



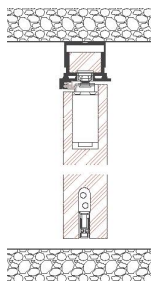
DGT 1500  
Doppelglastüre 1-flügelig  
Feuerschutzglas + ESG 4 mm  
Feuerwiderstand EI 30  
Rw = 38 dB



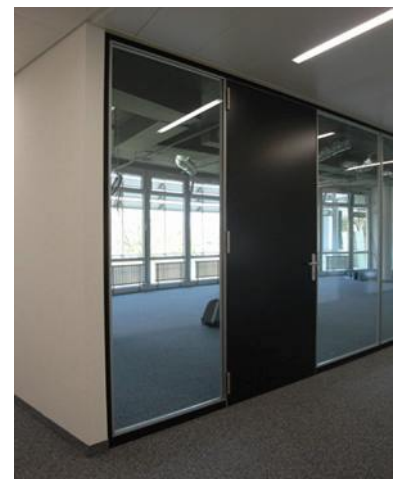
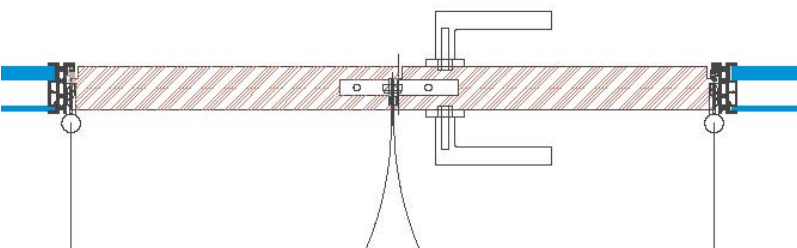
DGT2 1500  
Doppelglastüre 2-flügelig  
Feuerschutzglas + ESG 4 mm  
Feuerwiderstand EI 30  
Rw = 38 dB



HT 1500  
Holztüre 1-flügelig  
D = 54 mm  
Feuerwiderstand EI 30  
Rw = 38 dB



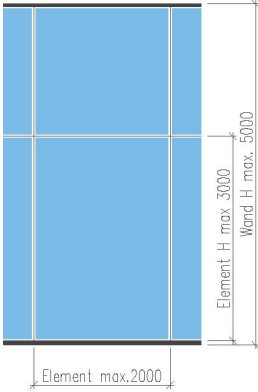
HT2 1500  
Holztüre 2-flügelig  
D = 54 mm  
Feuerwiderstand EI 30  
Rw = 38 dB





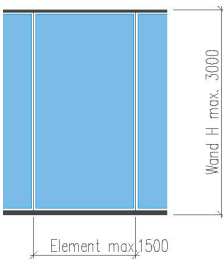
## System 1500 Brandschutz Maximale Grössen

**BLESS**  
ART



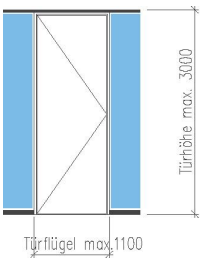
### **EI 30**

Einfachverglasung  
Doppelverglasung  
B max. = 2000 mm  
H max. Element = 3000 mm  
H max. Wand = 5000 mm



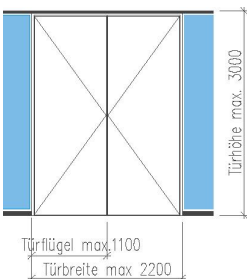
### **EI 60**

Einfachverglasung  
Doppelverglasung  
B max. = 1500 mm  
H max. Element = 3000 mm  
H max. Wand = 3000 mm



### **Türen EI 30**

1- flügelig  
Flügelbreite max. = 1100 mm  
Flügelhöhe max. = 3000 mm



### **Türen EI 30**

2- flügelig  
Flügelbreite max. = 1100 mm  
Türbreite max. = 2200 mm  
Flügelhöhe max. = 3000 mm